



REIMAGINE I-10

LOCATION OF OUTREACH EVENTS

Segment #1

Wednesday, July 26, 2017
from 5 to 7 p.m.

Vinton City Hall
436 E. Vinton Rd
Vinton, TX 79821

Segment #2

Thursday July 27, 2017
from 5 to 7 p.m.

UTEP Physical Plant
Complex #113, Building A
(Parking Lot R-2)
3120 Sun Bowl Dr
El Paso, TX 79968

Segment #3

Wednesday Aug. 9, 2017
from 5 to 7 p.m.

El Paso Multipurpose
Recreation Center
9031 Viscount Blvd
El Paso, TX 79925

Segment #4

Tuesday Aug. 8, 2017
from 5 to 7 p.m.

Rio Vista Community Center
901 N Rio Vista Rd
El Paso, TX 79927

THANK YOU

YOUR PARTICIPATION IS VALUED & APPRECIATED

The events will be conducted in English. If English is not your primary language and you have difficulty communicating effectively in English, Spanish-language interpretation will be provided. If you have a disability and need assistance, special arrangements can be made to accommodate most needs. If you require accommodation to attend the events, please contact TxDOT El Paso District Public Information Officer, Jennifer Wright, at (915) 790-4200 at least two days before the scheduled event. If you have any questions or would like to discuss the project in more detail, please contact Rebecca Pinto, P.E., TxDOT Project Manager, at (915) 790-4221 or Rebecca.Pinto@txdot.gov.



OUTREACH EVENTS

Segment #1
Wednesday, July 26, 2017
from 5 to 7 p.m.

Segment #2
Thursday, July 27, 2017
from 5 to 7 p.m.

Segment #3
Wednesday, Aug. 9, 2017
from 5 to 7 p.m.

Segment #4
Tuesday, Aug. 8, 2017
from 5 to 7 p.m.

➔ Learn more on back page



HOW TO STAY INVOLVED

Learn about the planning process, get status updates, stay informed, and be involved.

Online and Email
www.reimaginei10.com &
public@reimaginei10.com

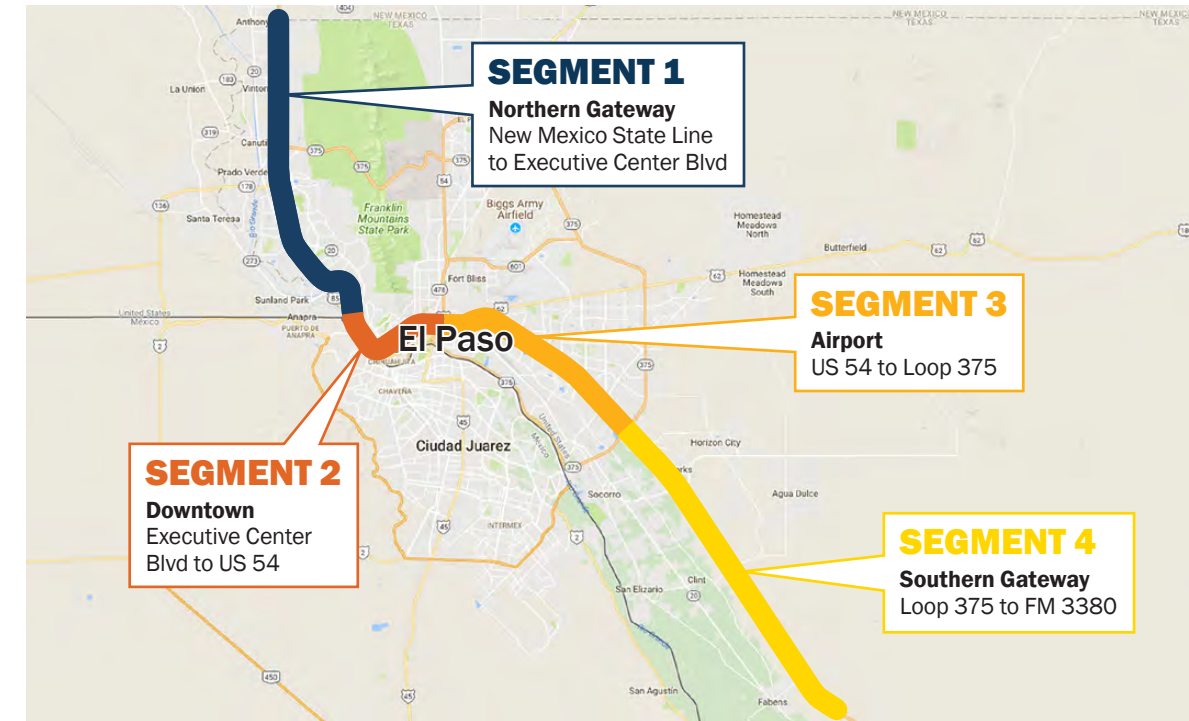


Scan this QR code with your phone to go directly to the Project Website



QUESTIONS?

Project Manager (s)
Rebecca Pinto, P.E., TxDOT
Rebecca.Pinto@txdot.gov
Brian Swindell, P.E. HDR
Brian.Swindell@hdrinc.com



The Reimagine I-10 project has been organized into the four segments depicted on the map.

WHAT IS REIMAGINE I-10?



Project Workgroup Meeting #1

TxDOT is conducting an advanced planning study for the I-10 Corridor from the New Mexico/Texas state line to Tornillo. The purpose of the study is to analyze and evaluate the current and future transportation needs for the I-10 El Paso corridor. This study is being called "Reimagine I-10" to emphasize the need to reimagine how the corridor operates today and develop unique solutions for the El Paso area.

The study duration is an anticipated 18-month process with completion of the recommended master plan by the end of 2018.

PROJECT GOALS

➔ Learn more about the Reimagine I-10 project goals and online commenting features inside



PROJECT GOALS



MOBILITY & CIRCULATION

Facilitate movement through and within the corridor



ENVIRONMENTAL

Design to minimize Environmental Impacts to the Human and Natural Environment



MULTIMODAL

Offer innovative transportation alternatives



DESIGN

Comply with accepted design standards to provide a safer facility with desirable ride quality



VALUE

Ensure that improvements are sustainable and balanced with respect to costs and benefits



TECHNOLOGY

Leverage advancing technologies to address corridor issues

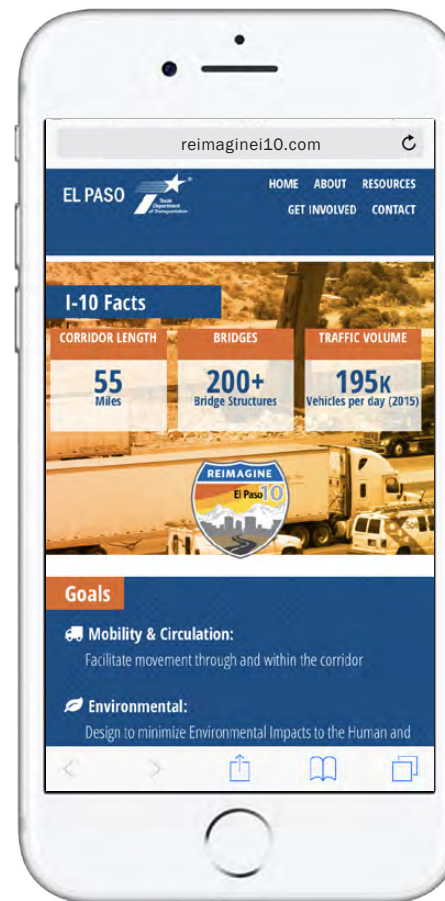
STEP-BY-STEP GUIDE TO COMMENTING ONLINE

You don't have to comment to see what other people have to say. Just click on the map and select "View Comments" at the bottom.

STEP 1

GO ONLINE

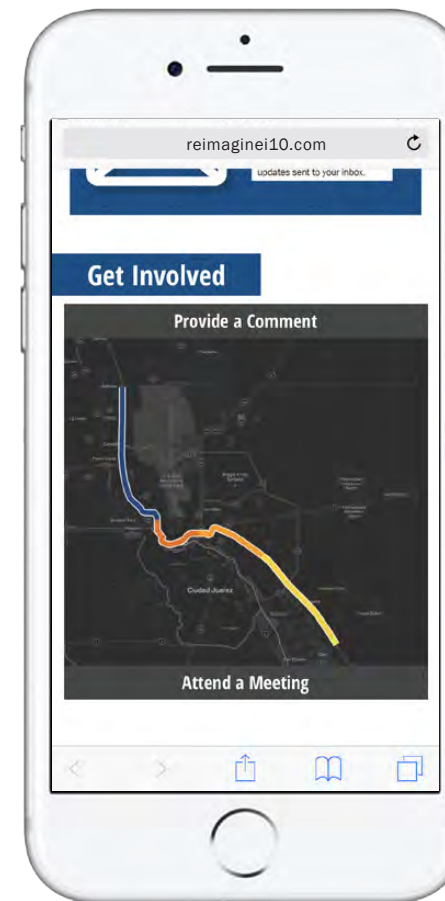
First navigate to reimaginei10.com on your phone, computer, or tablet.



STEP 2

LOCATE MAP

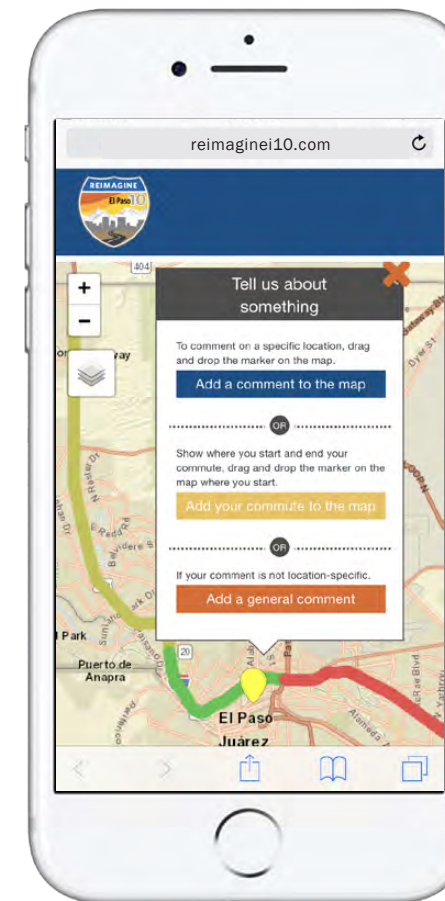
Scroll down and locate the "Provide a Comment" map. Click on the map to open the commenting tool.



STEP 3

GET STARTED

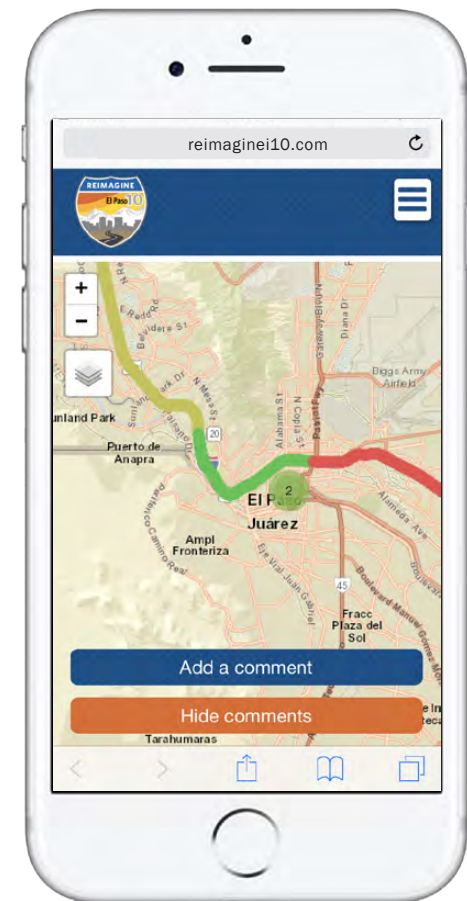
Click the "Add a Comment" button, drag your pin to the desired location, then choose your comment option type.



STEP 4

SUBMIT COMMENT

From here you can add your questions, ideas, issues, praise, commute details, or general comments to the map.



ALSO ONLINE AT REIMAGINEI10.COM



Subscribe to our newsletter

Stay up-to-date on I-10 news by subscribing to our Newsletter and get project updates sent to your inbox.



Get your questions answered

We are here to answer your questions and want to make it as painless as possible. By submitting an inquiry on our online form, a project team member can answer your request promptly.



Learn how to get involved

Learn how you can get involved along with additional I-10 facts about the corridor.